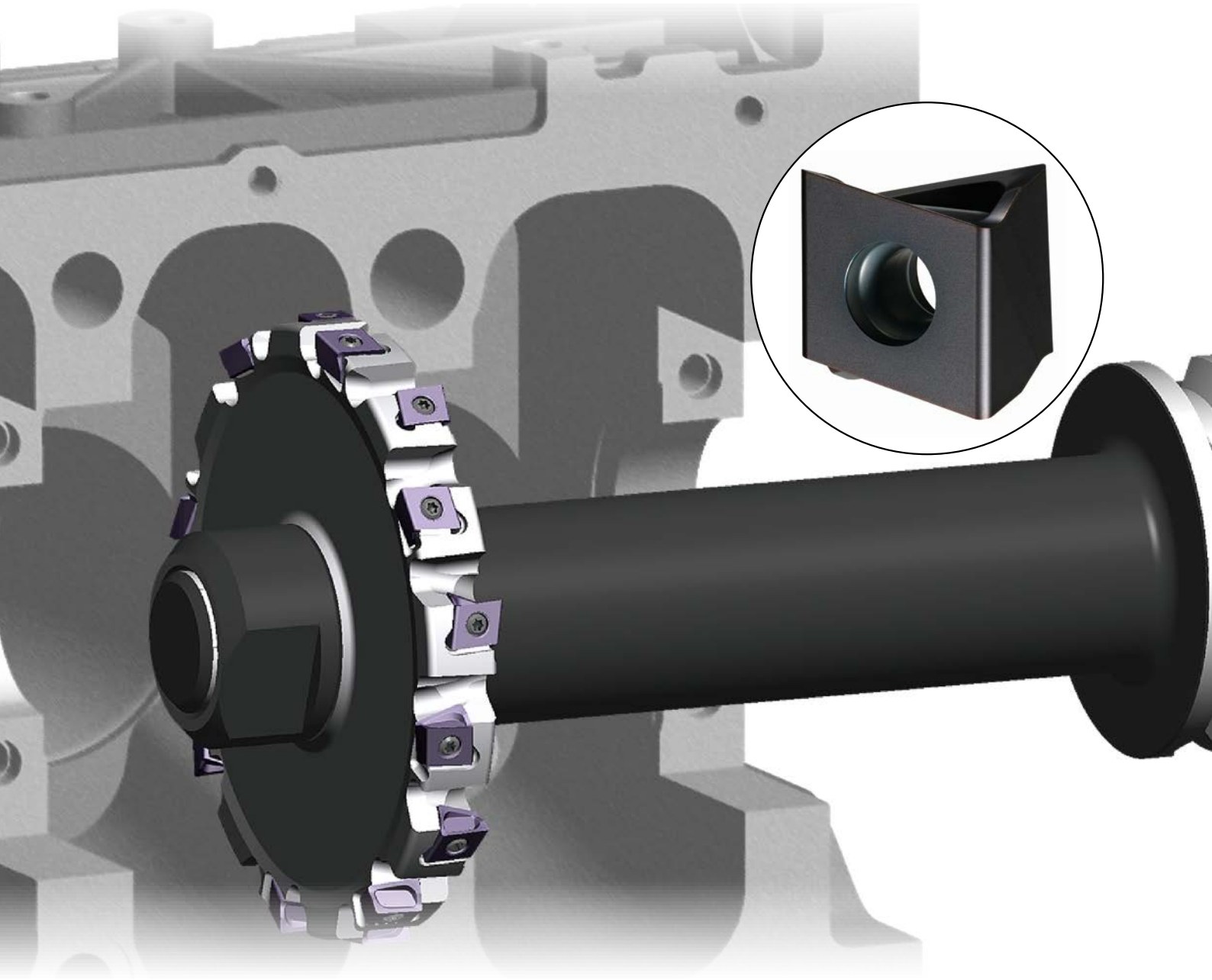

SIDE AND FACE MILLING CUTTER SERIES

SIDE AND FACE MACHINING WITH LOW CUTTING
RESISTANCE VERTICAL MOUNT DOUBLE-SIDED INSERTS
FOR DCV SERIES



*M*plus...

DCV3 / DCV4 / DCV5

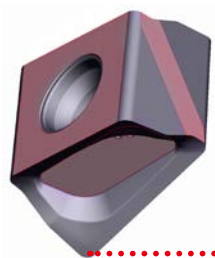
EXCHANGEABLE INSERTS

ECONOMICAL INSERT DESIGN

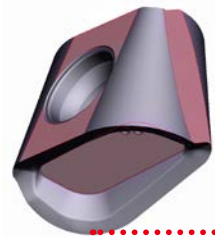
Tangential type insert with 4 cutting edges.

SECURE CLAMPING

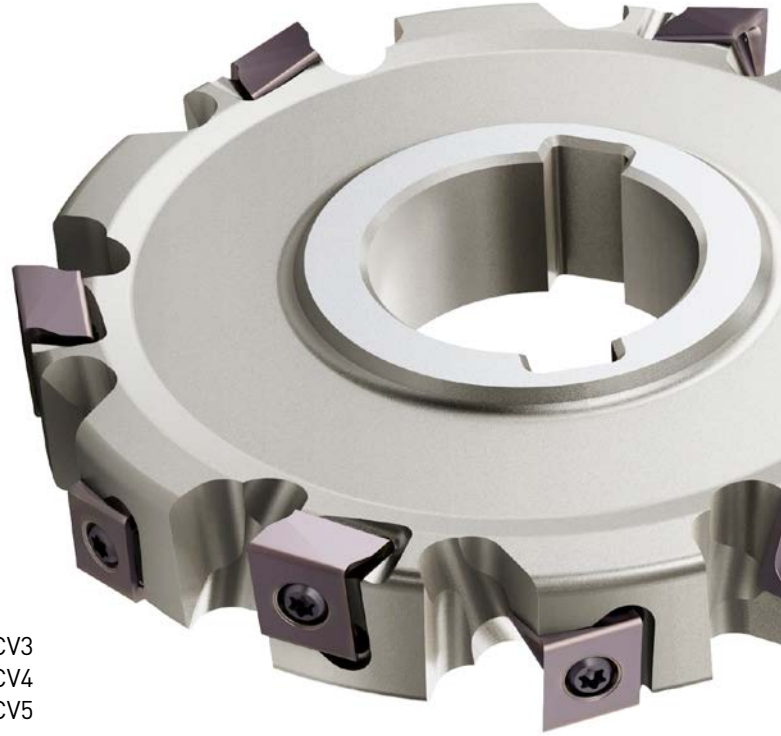
Special seating surfaces ensure all different insert radius sizes are securely clamped.



Corner radius R 0.4 mm

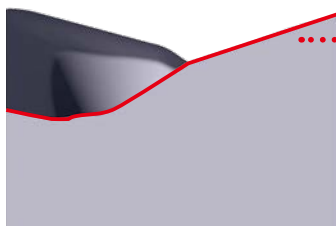


NEW Corner radius R 4.0 mm for DCV3
Corner radius R 5.0 mm for DCV4
Corner radius R 7.0 mm for DCV5

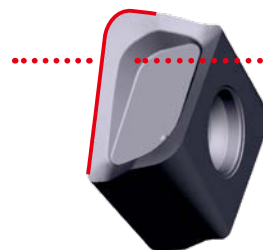


Cutter body with inserts : GAMF : + 8° GAMP : + 3°

LOW CUTTING RESISTANCE INSERT → PREFERRED SHARPNESS



Tough cutting edge
(Convex curve)

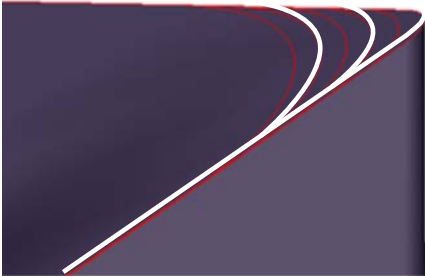


Double-phased helical
rake angles

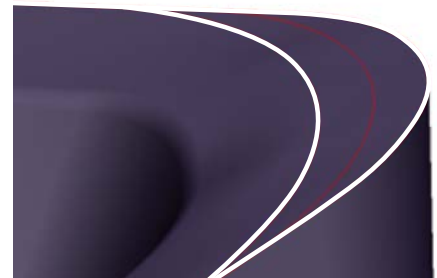
HIGH PRECISION CORNER RADIUS

PRECISION INSERTS FOR FORMING ACCURATE CORNER RADII IN THE WORKPIECE.

R 0.4 – R 3.0 mm

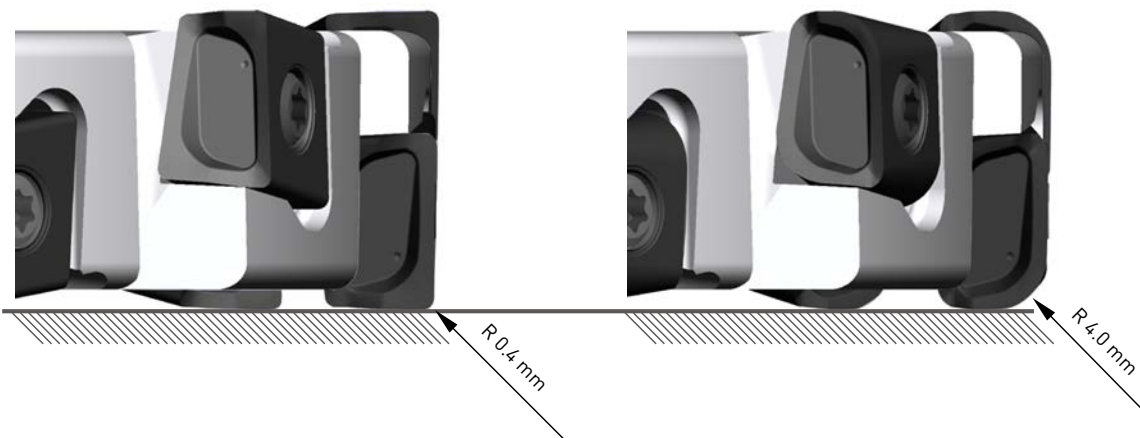


R 3.0 – R 7.0 mm



CONSISTENT GEOMETRY

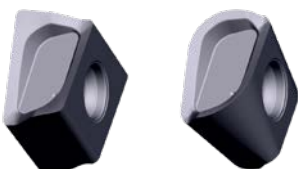
Cutting width and diameter do not change even when different corner radius inserts are used.



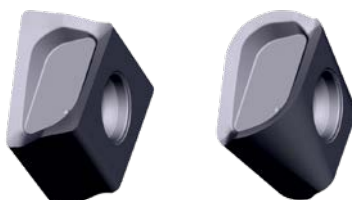
LARGE VARIETY OF CORNER RADII AVAILABLE

NEW

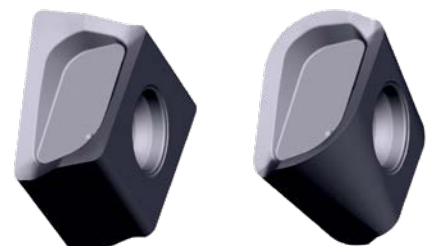
DCV3 = R 0.4 – R 4.0 mm



DCV4 = R 0.4 – R 5.0 mm



DCV5 = R 0.4 – R 7.0 mm

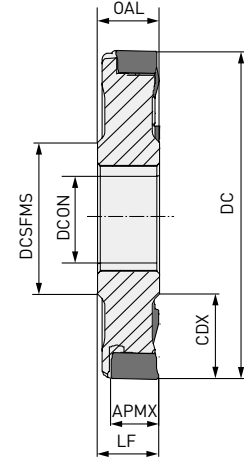
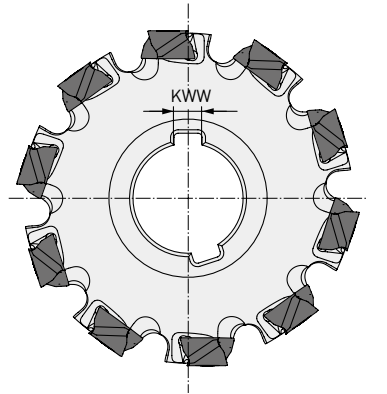


NEW

DCV3




P **K**

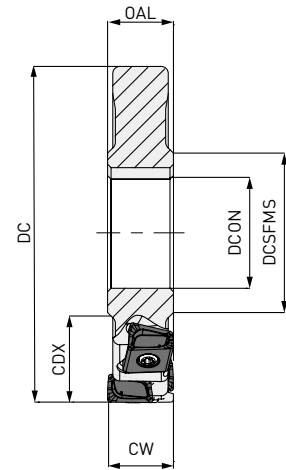
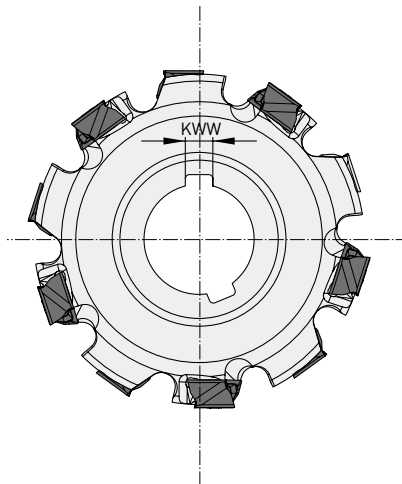


Max. APMX: 8.6 mm

HALF SIDE


DC	ZNF	LF = OAL	CDX	DCON	DCSFMS	KWW	
80 - 99.9	8		20.0	27	40	7	
100 - 124.9	10	≥12	27.0	32	46	8	LNGU09
125 - 160.0	12		35.0	40	55	10	

15 



Largest width CW: 17.2 mm

FULL SIDE

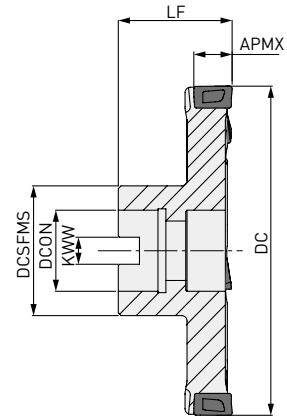
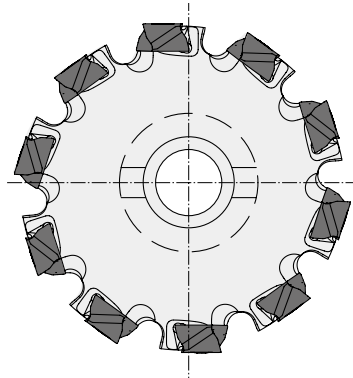
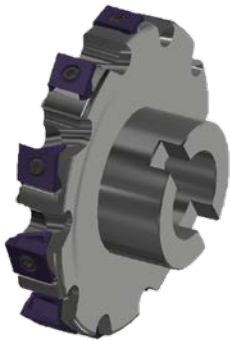
DC	ZNF	ZNP	LF = OAL	CW	CDX	DCON	DCSFMS	KWW	
80 - 99.9	4	8		12-17.2	20.0	27	40	7	
100 - 124.9	5	10	≥12	12-17.2	27.0	32	46	8	LNGU09
125 - 160.0	6	12		12-17.2	35.0	40	55	10	

1. Multi level designs available for each size. Please contact our technical department (MMC Hartmetall GmbH - special@mmchg.de) for details of any geometry not shown.

15 


NEW*Mplus...*

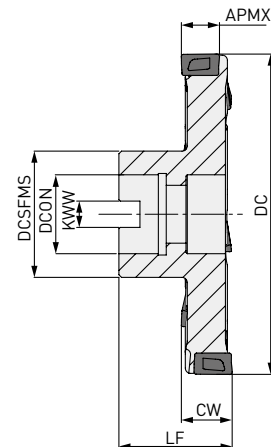
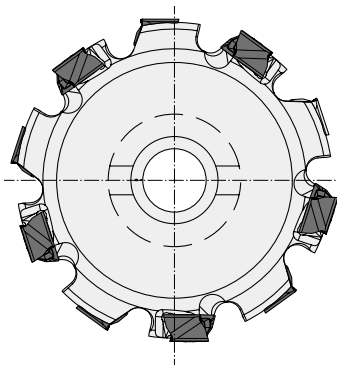
DCV3

**P** **K**

Max. APMX: 8.6 mm


HALF SIDE ARBOR

DC	ZEFP	LF	CDX	DCON	DCSFMS	KWW	
80 - 99.9	8	50	20.0	27	40	12.4	LNGU09
100 - 124.9	10	60	27.0	32	46	14.4	
125 - 160.0	12	60	35.0	40	55	16.4	

15 

Largest width CW: 17.2 mm

FULL SIDE ARBOR




DC	ZEFP	LF	CW	CDX	DCON	DCSFMS	KWW	
80 - 99.9	8	50	12-17.2	20.0	27	40	12.4	LNGU09
100 - 124.9	10	60	12-17.2	27.0	32	46	14.4	
125 - 160.0	12	60	12-17.2	35.0	40	55	16.4	

1. Multi level designs available for each size. Please contact our technical department (MMC Hartmetall GmbH - special@mmchg.de) for details of any geometry not shown.


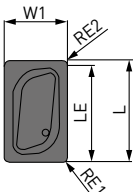
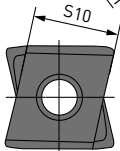
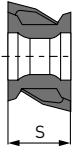
15 

DCV3

SPARE PARTS

Tool holder type		TQ (Nm)		
	Clamp screw	Clamp torque	Wrench	Anti-seize lubricant
DCV3 LNGU090600PNEOM	TS304	1.5	TKY08W	MK1KS

INSERT

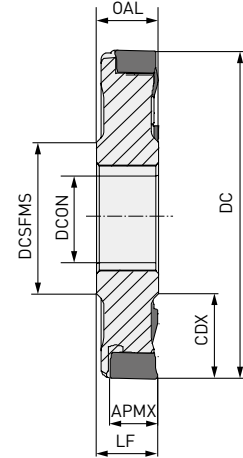
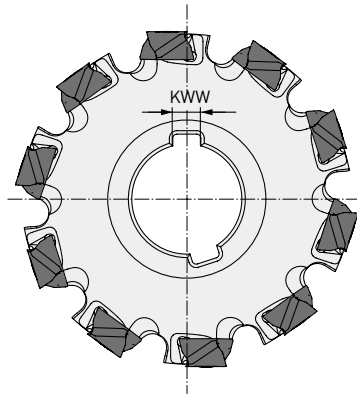
Order number	VP15TF	Hand	Class	Honing	L	LE	S	S10	RE1	W1	Shape	Geometry
NEW LNGU090604PNER-M	●	R	G	E	9	8.6	6	8.5	0.4	6	   	
NEW LNGU090608PNER-M	●	R	G	E	9	8.6	6	8.5	0.8	6		
NEW LNGU090612PNER-M	●	R	G	E	9	8.6	6	8.5	1.2	6		
NEW LNGU090616PNER-M	●	R	G	E	9	8.6	6	8.5	1.6	6		
NEW LNGU090620PNER-M	●	R	G	E	9	8.6	6	8.5	2	6		
NEW LNGU090624PNER-M	●	R	G	E	9	8.6	6	8.5	2.4	6		
NEW LNGU090630PNER-M	●	R	G	E	9	8.6	6	8.5	3	6		
NEW LNGU090640PNER-M	●	R	G	E	9	8.6	6	8.5	4	6		
NEW LNGU090604PNEL-M	●	L	G	E	9	8.6	6	8.5	0.4	6		
NEW LNGU090608PNEL-M	●	L	G	E	9	8.6	6	8.5	0.8	6		
NEW LNGU090612PNEL-M	●	L	G	E	9	8.6	6	8.5	1.2	6		
NEW LNGU090616PNEL-M	●	L	G	E	9	8.6	6	8.5	1.6	6		
NEW LNGU090620PNEL-M	●	L	G	E	9	8.6	6	8.5	2	6		
NEW LNGU090624PNEL-M	●	L	G	E	9	8.6	6	8.5	2.4	6		
NEW LNGU090630PNEL-M	●	L	G	E	9	8.6	6	8.5	3	6		
NEW LNGU090640PNEL-M	●	L	G	E	9	8.6	6	8.5	4	6		

[10 inserts in one case]

DCV4




P **K**

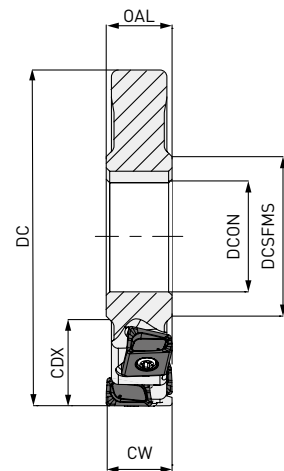
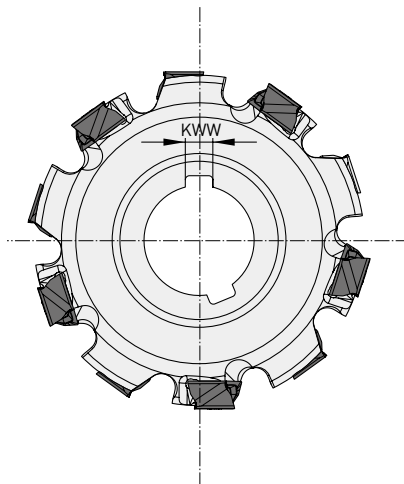


Max. APMX: RE1 < 3.0 mm 12.2 mm
RE1 > 3.0 mm 11.4 mm

HALF SIDE


DC	ZEFP	LF = OAL	CDX	DCON	DCSFMS	KWW	
80 - 99.9	8	18	20.0	27	40	7	LNGU13
100 - 124.9	10		27.0	32	46	8	
125 - 159.9	12		35.0	40	55	10	
160 - 200	14		52.5	40	55	10	

15 



Largest width CW: 24 mm

FULL SIDE

DC	ZEFP	CW	CDX	DCON	DCSFMS	KWW	
80 - 99.9	4	18-24	20.0	27	40	7	LNGU13
100 - 124.9	5	18-24	27.0	32	46	8	
125 - 159.9	6	18-24	35.0	40	55	10	
160 - 200	7	18-24	52.5	40	55	10	

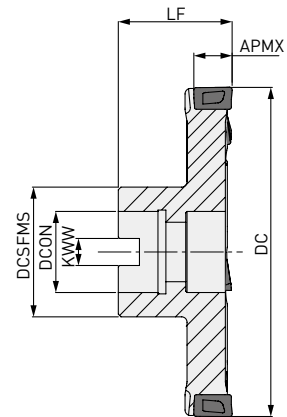
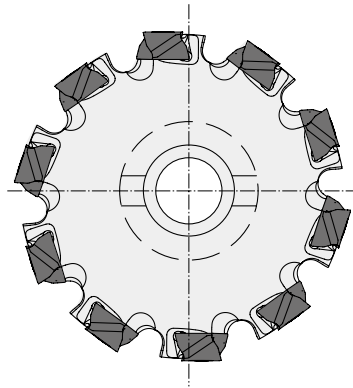
1. Multi level designs available for each size. Please contact our technical department (MMC Hartmetall GmbH - special@mmchg.de) for details of any geometry not shown.

15 

DCV4




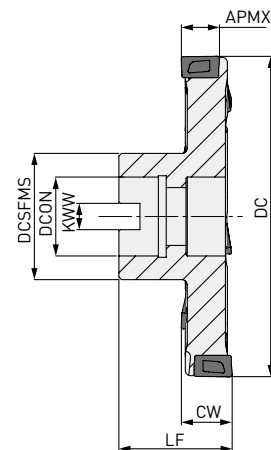
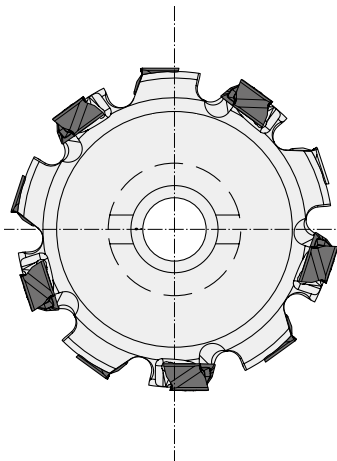
P K



Max. APMX: RE1 < 3.0 mm 12.2 mm
RE1 > 3.0 mm 11.4 mm

HALF SIDE ARBOR


DC	ZEFP	LF	CDX	DCON	DCSFMS	KWW	
80 - 99.9	8 - 10	50	20	27	40	12.4	LNGU13
100 - 124.9	10 - 12	60	27	32	46	14.4	
125 - 159.9	12 - 14	60	35	40	55	16.4	
160 - 200	14 - 20	70	52.5	40	55	16.4	



15 

Largest width CW: 24 mm

FULL SIDE ARBOR

DC	ZEFP	LF	CW	CDX	DCON	DCSFMS	KWW	
80 - 99.9	8 - 10	50	18-24	20	27	40	12.4	LNGU13
100 - 124.9	10 - 12	60	18-24	27	32	46	14.4	
125 - 159.9	12 - 14	60	18-24	35	40	55	16.4	
160 - 200	14 - 20	70	18-24	52.5	40	55	16.4	

1. Multi level designs available for each size. Please contact our technical department (MMC Hartmetall GmbH - special@mmchg.de) for details of any geometry not shown.

15 

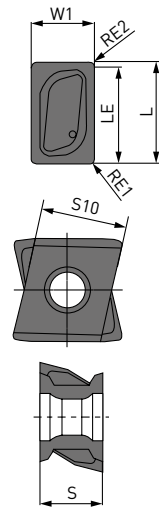
DCV4

SPARE PARTS

Tool holder type		TQ (Nm)		
	Clamp screw	Clamp torque	Wrench	Anti-seize lubricant
DCV4 LNGU13080PNE	TS406	3.5	TKY15T	MK1KS

INSERT

Order number	MP6120	VP15TF	Hand	Class	Honing	L	LE	S	S10	RE1	RE2	W1	Shape	Geometry
LNGU130804PNER-M	●		R	G	E	13.0	12.2	8.0	11.0	0.4	0.8	8.0		
LNGU130804PNEL-M	●		L	G	E	13.0	12.2	8.0	11.0	0.4	0.8	8.0		
LNGU130808PNER-M	●		R	G	E	13.0	12.2	8.0	11.0	0.8	0.8	8.0		
LNGU130808PNEL-M	●		L	G	E	13.0	12.2	8.0	11.0	0.8	0.8	8.0		
LNGU130812PNER-M	●		R	G	E	13.0	12.2	8.0	11.0	1.2	0.8	8.0		
LNGU130812PNEL-M	●		L	G	E	13.0	12.2	8.0	11.0	1.2	0.8	8.0		
LNGU130816PNER-M	●		R	G	E	13.0	12.2	8.0	11.0	1.6	0.8	8.0		
LNGU130816PNEL-M	●		L	G	E	13.0	12.2	8.0	11.0	1.6	0.8	8.0		
LNGU130820PNER-M	●		R	G	E	13.0	12.2	8.0	11.0	2.0	0.8	8.0		
LNGU130820PNEL-M	●		L	G	E	13.0	12.2	8.0	11.0	2.0	0.8	8.0		
LNGU130824PNER-M	●		R	G	E	13.0	12.2	8.0	11.0	2.4	0.8	8.0		
LNGU130824PNEL-M	●		L	G	E	13.0	12.2	8.0	11.0	2.4	0.8	8.0		
LNGU130830PNER-M	●		R	G	E	13.0	11.4	8.0	11.0	3.0	1.6	8.0		
LNGU130830PNEL-M	●		L	G	E	13.0	11.4	8.0	11.0	3.0	1.6	8.0		
LNGU130840PNER-M	●		R	G	E	13.0	11.4	8.0	11.0	4.0	1.6	8.0		
LNGU130840PNEL-M	●		L	G	E	13.0	11.4	8.0	11.0	4.0	1.6	8.0		
LNGU130850PNER-M	●		R	G	E	13.0	11.4	8.0	11.0	5.0	1.6	8.0		
LNGU130850PNEL-M	●		L	G	E	13.0	11.4	8.0	11.0	5.0	1.6	8.0		
LNGU130804PNER-R	●	●	R	G	E	13.0	12.2	8.0	11.0	0.4	0.8	8.0		
LNGU130804PNEL-R	●	●	L	G	E	13.0	12.2	8.0	11.0	0.4	0.8	8.0		
LNGU130808PNER-R	●	●	R	G	E	13.0	12.2	8.0	11.0	0.8	0.8	8.0		
LNGU130808PNEL-R	●	●	L	G	E	13.0	12.2	8.0	11.0	0.8	0.8	8.0		
LNGU130812PNER-R	●	●	R	G	E	13.0	12.2	8.0	11.0	1.2	0.8	8.0		
LNGU130812PNEL-R	●	●	L	G	E	13.0	12.2	8.0	11.0	1.2	0.8	8.0		
LNGU130816PNER-R	●	●	R	G	E	13.0	12.2	8.0	11.0	1.6	0.8	8.0		
LNGU130816PNEL-R	●	●	L	G	E	13.0	12.2	8.0	11.0	1.6	0.8	8.0		
LNGU130820PNER-R	●	●	R	G	E	13.0	12.2	8.0	11.0	2.0	0.8	8.0		
LNGU130820PNEL-R	●	●	L	G	E	13.0	12.2	8.0	11.0	2.0	0.8	8.0		
LNGU130824PNER-R	●	●	R	G	E	13.0	12.2	8.0	11.0	2.4	0.8	8.0		
LNGU130824PNEL-R	●	●	L	G	E	13.0	12.2	8.0	11.0	2.4	0.8	8.0		
LNGU130830PNER-R	●	●	R	G	E	13.0	11.4	8.0	11.0	3.0	1.6	8.0		
LNGU130830PNEL-R	●	●	L	G	E	13.0	11.4	8.0	11.0	3.0	1.6	8.0		
LNGU130840PNER-R	●	●	R	G	E	13.0	11.4	8.0	11.0	4.0	1.6	8.0		
LNGU130840PNEL-R	●	●	L	G	E	13.0	11.4	8.0	11.0	4.0	1.6	8.0		
LNGU130850PNER-R	●	●	R	G	E	13.0	11.4	8.0	11.0	5.0	1.6	8.0		
LNGU130850PNEL-R	●	●	L	G	E	13.0	11.4	8.0	11.0	5.0	1.6	8.0		



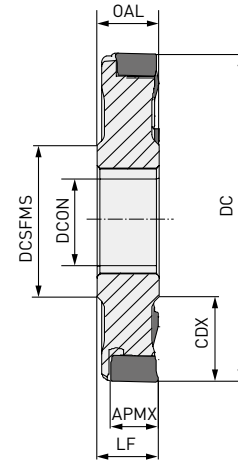
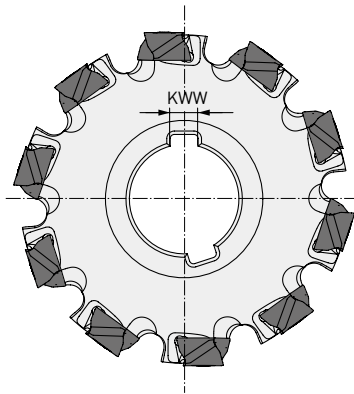
(10 inserts in one case)

● : Inventory maintained. □ : Produced to order only

DCV5




P K

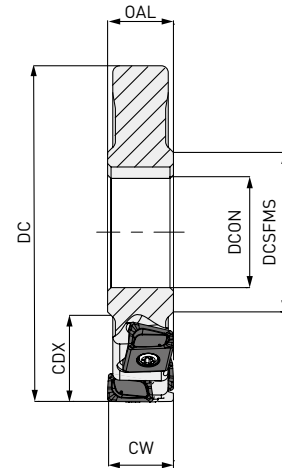
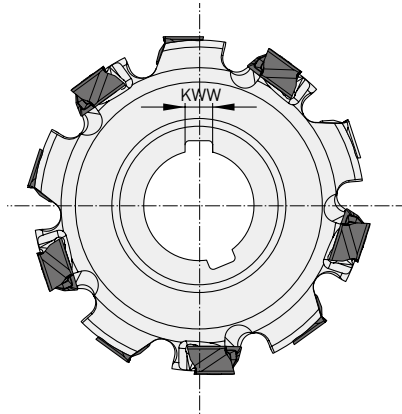


Max. APMX: RE1 < 3.0 mm 16.2 mm
RE1 > 3.0 mm 15.4 mm

HALF SIDE


DC	ZEFP	LF = OAL	CDX	DCON	DCSFMS	KWW	
100 - 124.9	8	23	27.0	32	46	8	LNGU17
125 - 159.9	10		35.0	40	55	10	
160 - 199.9	12		52.5	40	55	10	
200 - 250	16		65.0	50	70	12	

15 



Largest width CW: 32 mm

FULL SIDE

DC	ZEFP	CW	CDX	DCON	DCSFMS	KWW	
100 - 124.9	8	23-32	27.0	32	46	8	LNGU17
125 - 159.9	10		35.0	40	55	10	
160 - 199.9	12		52.5	40	55	10	
200 - 250	16		65.0	50	70	12	

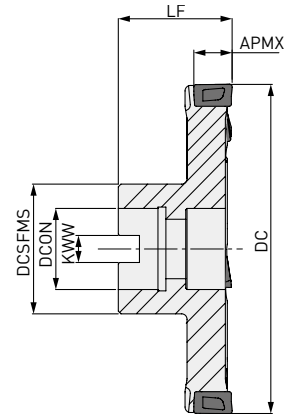
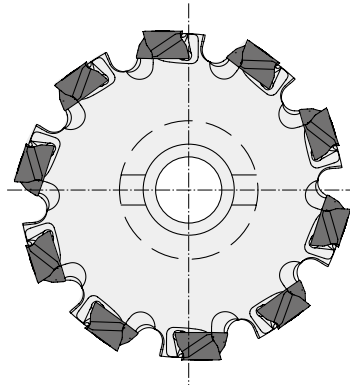
1. Multi level designs available for each size. Please contact our technical department (MMC Hartmetall GmbH - special@mmchg.de) for details of any geometry not shown.

15 

DCV5




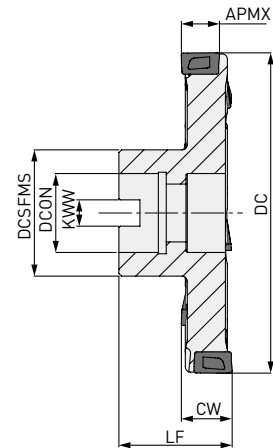
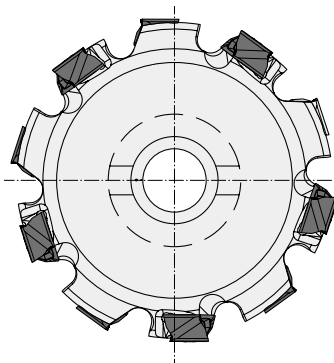
P K



Max. APMX: RE1 < 3.0 mm 16.2 mm
RE1 > 3.0 mm 15.4 mm


HALF SIDE ARBOR

DC	ZEFP	LF	CDX	DCON	DCSFMS	KWW	
100 - 124.9	8 - 10	50	27	32	46	14.4	LNGU17
125 - 159.9	10 - 12	60	35	40	55	16.4	
160 - 199.9	12 - 14	60	52.5	40	55	16.4	
200 - 250	14 - 20	70	65	40	70	16.4	



Largest width CW: 32 mm




FULL SIDE ARBOR

DC	ZEFP	LF	CW	CDX	DCON	DCSFMS	KWW	
100 - 124.9	8 - 10	60	23-32	27	32	46	14.4	LNGU17
125 - 159.9	10 - 12	60		35	40	55	16.4	
160 - 199.9	12 - 14	70		52.5	40	55	16.4	
200 - 250.0	14 - 20	70		65	40	70	16.4	

1. Multi level designs available for each size. Please contact our technical department (MMC Hartmetall GmbH - special@mmchg.de) for details of any geometry not shown.

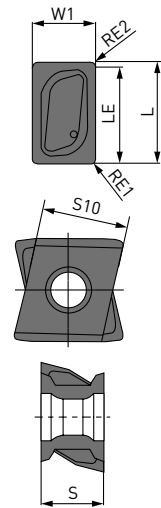
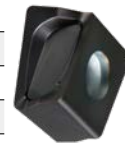
DCV5

SPARE PARTS

Tool holder type		TQ (Nm)		
	Clamp screw	Clamp torque	Wrench	Anti-seize lubricant
DCV5 LNGU17100PNEOR	TS53	7.5	TKY25T	MK1KS


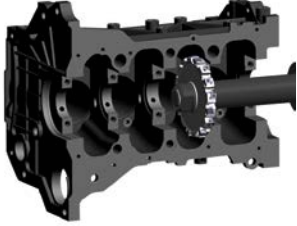
INSERT

Order number	MP6120	VP15TF	Hand	Class	Honing	L	LE	S	S10	RE1	RE2	W1	D1	Shape	Geometry
LNGU171004PNER-R	●	●	R	G	E	17.0	16.2	10.0	13.0	0.4	0.8	10.0	5.5		
LNGU171004PNEL-R	●	●	L	G	E	17.0	16.2	10.0	13.0	0.4	0.8	10.0	5.5		
LNGU171008PNER-R	●	●	R	G	E	17.0	16.2	10.0	13.0	0.8	0.8	10.0	5.5		
LNGU171008PNEL-R	●	●	L	G	E	17.0	16.2	10.0	13.0	0.8	0.8	10.0	5.5		
LNGU171012PNER-R	●	●	R	G	E	17.0	16.2	10.0	13.0	1.2	0.8	10.0	5.5		
LNGU171012PNEL-R	●	●	L	G	E	17.0	16.2	10.0	13.0	1.2	0.8	10.0	5.5		
LNGU171016PNER-R	●	●	R	G	E	17.0	16.2	10.0	13.0	1.6	0.8	10.0	5.5		
LNGU171016PNEL-R	●	●	L	G	E	17.0	16.2	10.0	13.0	1.6	0.8	10.0	5.5		
LNGU171020PNER-R	●	●	R	G	E	17.0	16.2	10.0	13.0	2.0	0.8	10.0	5.5		
LNGU171020PNEL-R	●	●	L	G	E	17.0	16.2	10.0	13.0	2.0	0.8	10.0	5.5		
LNGU171024PNER-R	●	●	R	G	E	17.0	16.2	10.0	13.0	2.4	0.8	10.0	5.5		
LNGU171024PNEL-R	●	●	L	G	E	17.0	16.2	10.0	13.0	2.4	0.8	10.0	5.5		
LNGU171030PNER-R	●	●	R	G	E	17.0	15.4	10.0	13.0	3.0	1.6	10.0	5.5		
LNGU171030PNEL-R	●	●	L	G	E	17.0	15.4	10.0	13.0	3.0	1.6	10.0	5.5		
LNGU171040PNER-R	●	●	R	G	E	17.0	15.4	10.0	13.0	4.0	1.6	10.0	5.5		
LNGU171040PNEL-R	●	●	L	G	E	17.0	15.4	10.0	13.0	4.0	1.6	10.0	5.5		
LNGU171050PNER-R	●	●	R	G	E	17.0	15.4	10.0	13.0	5.0	1.6	10.0	5.5		
LNGU171050PNEL-R	●	●	L	G	E	17.0	15.4	10.0	13.0	5.0	1.6	10.0	5.5		
LNGU171060PNER-R	●	●	R	G	E	17.0	15.4	10.0	13.0	6.0	1.6	10.0	5.5		
LNGU171060PNEL-R	●	●	L	G	E	17.0	15.4	10.0	13.0	6.0	1.6	10.0	5.5		
LNGU171070PNER-R	●	●	R	G	E	17.0	15.4	10.0	13.0	7.0	1.6	10.0	5.5		
LNGU171070PNEL-R	●	●	L	G	E	17.0	15.4	10.0	13.0	7.0	1.6	10.0	5.5		



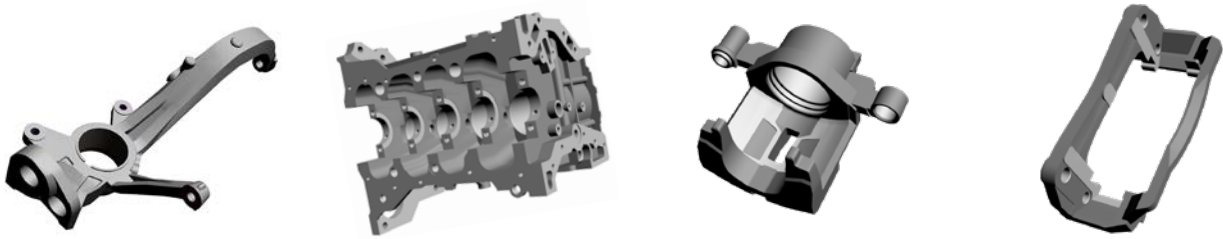
[10 inserts in one case]

APPLICATION EXAMPLES

Tool	DCV4 Ø 300 mm	DCV4 Ø 160 mm
Insert (Grade)	LNGU130804PNER-M (VP15TF)	LNGU130804PNER-M (VP15TF)
	Brake caliper (DIN GGG40.3)	Cylinder block (DIN GG25)
Workpiece		
n (min ⁻¹)	120	500
Vc (m/min)	113	201
fz (mm/t.)	0.09-0.24	0.14
Vf (mm/min)	150-400	500
ap (mm)	1.0-2.0	1.0
Cutting Mode	Dry cutting	Dry cutting
Machine	Machining centre	Horizontal
Results	Approximately 2 x longer tool life than conventional products. Excellent dimensional accuracy and surface finish. Improved machining efficiency gave a 30 % reduction in tooling costs.	1.5 x better machining efficiency than conventional products. Approximately double tool life. Stable cutting with minimal sound and provided a good surface finish. Improved machining efficiency and longer tool life.

1. The above application examples are customer's application examples, and can differ from the recommended conditions.

UNIQUE SIDE CUTTER SERIES



Taking advantage of the latest technology, materials and cutter geometry.

CLASSIFIED

	DCV3	DCV4	DCV5
Material	P K	P K	P K
Low cutting resistance	◎	◎	◎
Toughness	◎	◎	◎
Insert shape		Vertical	Vertical
ZNF		Double sided insert	Double sided insert
ZNP	4	4	4
Half side Max. depth of cut APMX	RE ≤ 4.0 mm 8.6 mm RE ≥ 3.0mm 11.4 mm	RE ≤ 3.0 mm 12.2 mm RE ≥ 3.0mm 11.4 mm	RE ≤ 3.0 mm 16.2 mm RE ≥ 3.0 mm 15.4 mm
Full side Max. cutting dia DC	Ø 300 mm	Ø 400 mm	Ø 660 mm

DCV3 / DCV4 / DCV5

RECOMMENDED CUTTING CONDITIONS

SHOULDER MILLING

Material	Hardness	Grade	Vc	ap	ae	fz	Cutting mode
P Steel	≤180HB	MP6120 VP15TF	150 (130-180)	≤APMX	<10%	0.10 (0.08-0.15)	
					<30%		
					≤50%		
				≤2.0	≤50%		
Carbon steel/ Alloy steel	180-280HB	MP6120 VP15TF	150 (130-180)	≤4.0	<10%	0.12 (0.08-0.20)	
				≤4.0	≤50%	0.10 (0.08-0.15)	
				≤APMX	<10%	0.10 (0.08-0.15)	
				≤APMX	≤50%	0.10 (0.08-0.12)	
Cast iron	Tensile strength ≤ 350MPa	VP15TF	150 (130-180)	≤2.0	≤50%	0.12 (0.08-0.20)	
				≤4.0	<10%	0.12 (0.08-0.20)	
				≤4.0	≤50%	0.10 (0.08-0.15)	
				≤APMX	<10%	0.10 (0.08-0.15)	
K Gray cast iron	Tensile strength ≤ 450MPa	VP15TF	130 (110-160)	≤APMX	≤50%	0.10 (0.08-0.12)	
				≤2.0	≤50%	0.12 (0.08-0.20)	
				≤4.0	<10%	0.12 (0.08-0.20)	
				≤4.0	≤50%	0.10 (0.08-0.15)	
Ductile cast iron	Tensile strength ≤ 800MPa	VP15TF	130 (110-160)	≤APMX	<10%	0.10 (0.08-0.15)	
				≤2.0	≤50%	0.12 (0.08-0.20)	
				≤4.0	<10%	0.12 (0.08-0.20)	
				≤4.0	≤50%	0.10 (0.08-0.15)	

FACE MILLING

Material	Hardness	Grade	Vc	ap	fz	Cutting mode	
P Steel	≤180HB	MP6120 VP15TF	150 (130-180)	≤APMX	0.10 (0.08-0.15)		
				≤2.0			0.12 (0.08-0.20)
				≤4.0			0.10 (0.08-0.15)
Carbon steel/ Alloy steel	180-280HB	MP6120 VP15TF	150 (130-180)	≤APMX	0.10 (0.08-0.12)		
				≤2.0	0.12 (0.08-0.20)		
				≤4.0	0.10 (0.08-0.15)		
Cast iron	Tensile strength ≤ 350MPa	VP15TF	150 (130-180)	≤APMX	0.10 (0.08-0.12)		
				≤2.0	0.12 (0.08-0.20)		
				≤4.0	0.10 (0.08-0.15)		
K Gray cast iron	Tensile strength ≤ 450MPa	VP15TF	150 (130-180)	≤APMX	0.10 (0.08-0.12)		
				≤2.0	0.12 (0.08-0.20)		
				≤4.0	0.10 (0.08-0.15)		
Ductile cast iron	Tensile strength ≤ 800MPa	VP15TF	130 (110-160)	≤APMX	0.10 (0.08-0.15)		
				≤2.0	0.12 (0.08-0.20)		
				≤4.0	0.10 (0.08-0.15)		



GERMANY

MMC HARTMETALL GMBH
Comeniusstr. 2 . 40670 Meerbusch
Phone +49 2159 91890 . Fax +49 2159 918966
Email admin@mmchg.de

U.K.

MMC HARDMETAL U.K. LTD.
Mitsubishi House . Galena Close . Tamworth . Staffs. B77 4AS
Phone +44 1827 312312 . Fax +44 1827 312314
Email sales@mitsubishicarbide.co.uk

SPAIN

MITSUBISHI MATERIALS ESPAÑA, S.A.
Calle Emperador 2 . 46136 Museros/Valencia
Phone +34 96 1441711 . Fax +34 96 1443786
Email comercial@mmevalencia.es

FRANCE

MMC METAL FRANCE S.A.R.L.
6, Rue Jacques Monod . 91400 Orsay
Phone +33 1 69 35 53 53 . Fax +33 1 69 35 53 50
Email mmfsales@mmc-metal-france.fr

POLAND

MMC HARDMETAL POLAND SP. Z O.O
Al. Armii Krajowej 61 . 50-541 Wrocław
Phone +48 71335 1620 . Fax +48 71335 1621
Email sales@mitsubishicarbide.com.pl

RUSSIA

MMC HARDMETAL OOO LTD.
Electrozavodskaya St. 24 . build. 3 . Moscow . 107023
Phone +7 495 725 58 85 . Fax +7 495 981 39 79
Email info@mmc-carbide.ru

ITALY

MMC ITALIA S.R.L.
Viale Certosa 144 . 20156 Milano
Phone +39 0293 77031 . Fax +39 0293 589093
Email info@mmc-italia.it

TURKEY

MMC HARTMETALL GMBH ALMANYA - İZMİR MERKEZ ŞUBESİ
Adalet Mahallesi Anadolu Caddesi No: 41-1 . 15001 35530 Bayraklı /İzmir
Phone +90 232 5015000 . Fax +90 232 5015007
Email info@mmchg.com.tr

www.mitsubishicarbide.com | www.mmc-hardmetal.com


DISTRIBUTED BY:

□

□

└

└

Order Code: MP104E | 

Published: 2022.04 (0), Printed in Germany